

(51)

(13)
(24)

(5)

(19)

(1)

James Herman Moerick

9-2-86
16215-86
9-14-88
16260-88

Harriet E. Keefe

5-28-81

L.E. Emily Havill

Dec'd 2-6-83

7-11-85
10431-85 21.38 AC.

S. 54° 55' E. 1812

1-4-2006
2006-230

SURVEY #44578-04
12-22-2004

769.1
N. 47° 00' E

HIGHWAY

NO. 67

VACATED ROW
JAMES F. WEAVER, HE
11-17-87
5-7-01

NW. RY

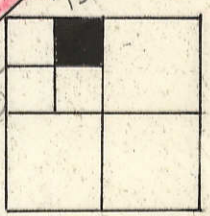
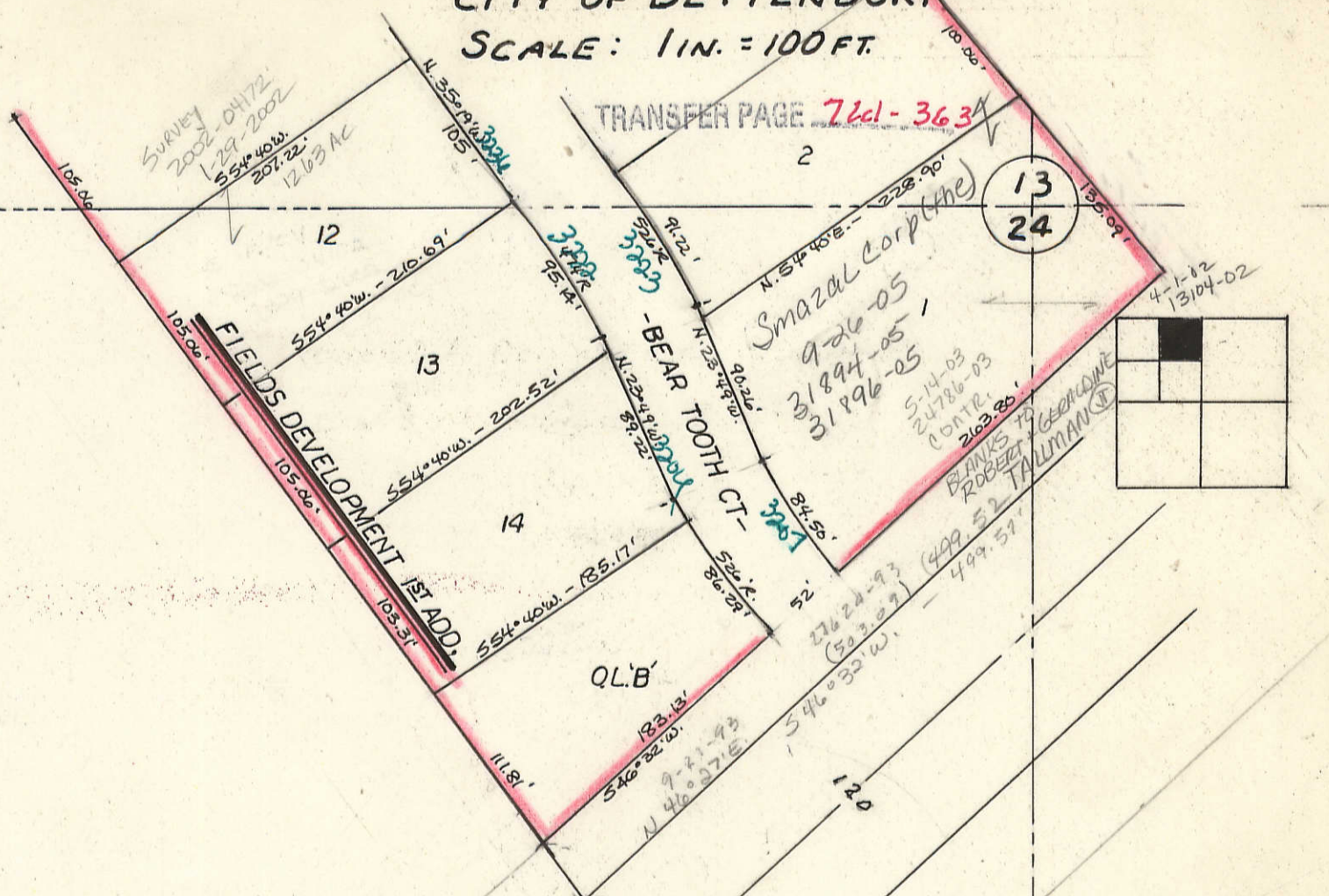
D. R.I.

RIVERSIDE DEVELOPMENT PARK
FIRST ADDITION

2472-2145

OUTLOT A
2700

62ND ST. COURT
2ND ADDN
590.00



SEC. 24-78-4